



Successful cooperation
between municipal
waste management
company LSJH and
environmental
organisation KAT in the
South-West
Archipelago of Finland

Keep the Archipelago Tidy Association



- Established in 1969, the Keep the Archipelago Tidy Association is a Finnish environmental organization for everyone who appreciates and enjoys the Finnish waterways, both the Baltic Sea and the lakes and rivers.
- The Association wants to keep Finland's coastlines, archipelago and lake areas clean, and support opportunities for sustainable water tourism.

Where it all begun...

Waste management was very undeveloped in the 1960s. In the archipelago areas people used to dump their rubbish into the sea or of construct private landfills. The beaches were very trashy.





KAT was founded in 1969 by individuals who were concerned about littering in the Finnish archipelago. At first, they put some trash bins in place and asked the locals to either burn or transport the trash to the mainland.



What does KAT do now:



Environmental
management



Project work



Communication and
education

Financing

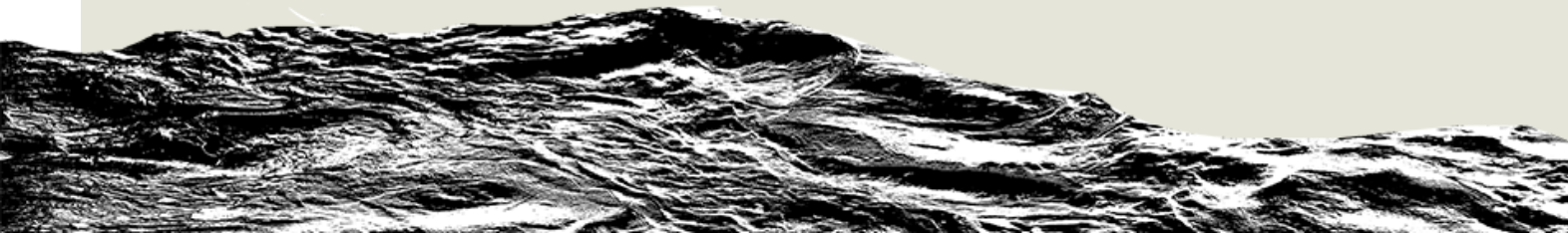


Ministry
of the
Environment
in Finland

Membership
fees

Corporate
Sponsorship

Projects





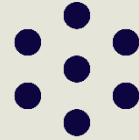
13 000 members

- The members of KAT are boaters, paddlers, fishermen, outdoor people and all the people who are interested in wellbeing of Finnish archipelago and lake areas.
- The membership fee is 50/25 € per year.
- Our members appreciate clean waterways and natural surroundings, and they indicate this by attaching the Seal sticker to their boats, canoes and even their cars.

The main sponsors in 2023



BEWESHIP



CLIMECON

Helvar

KappAhl



KONGSBERG



MAKIA

EST.2001 — HELSINKI



OceanSpirit.fi

**OTAVA
MEDIA**

Rapala®

SARLIN

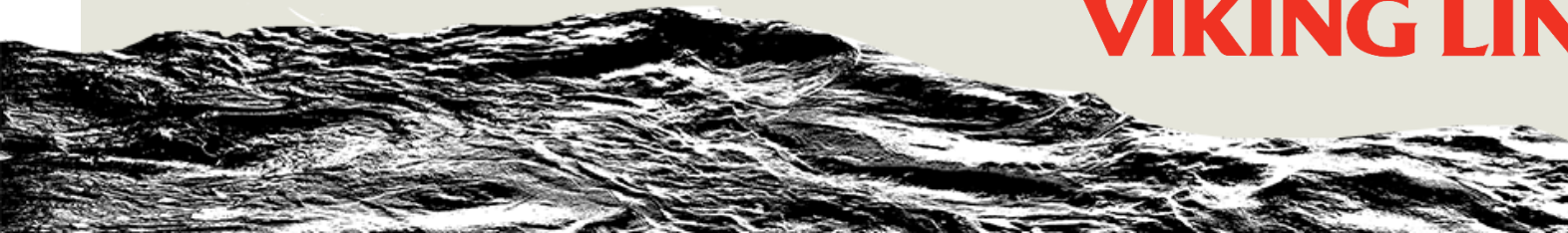
SUOMEN JALOMETALLIKIERRÄTYS



**TURKU
ENERGIA**

VIKING LINE

ÄLANDSBANKEN



LSJH in a nutshell

Turnover
27,8M€

Personnel
158

Full time residents
440 000

Leisure residences
40 000

Municipal
waste/year
187 000 tons

Utilization of waste
98,7%

Sludge wells
emptyings
~15 000/year
(by end of year
2026~30 000)

Waste bins
emptyings
600 000/year
(by end of year
2030~ 7 500 000)

Waste management for residential and public sector



4 waste treatment centres
9 waste sorting stations

Pop Up- and Mobile
sortings stations

~200 recycling point



Finnish municipal waste management in brief



- First waste law 1978, second 1993, present 2021
 - EU member since 1995 -> most WM legislation EU-origin
 - landfill ban organic waste (TOC 10%) from January 2016 onwards
- Municipalities are responsible of
 - household waste
 - municipal waste from public sector
 - secondary responsibility for commercial waste (if private services not available)
- Extended producer responsibility
 - paper, packaging (since 2016), tires, vehicles, WEEE, batteries
 - for packaging municipalities provides collection services
- Other municipal and commercial waste on the private market

Cooperation since 1987



- ✓ In 1987 KAT founded a company to take care of the waste from the cottages and permanent households
- ✓ The vulnelabre archipelago area was and are visited by tens of thousand´s of travellers every year, especially in the summer time
- ✓ In the same area there also is about 7 000 leisure cottages and about 700 permanent households
- ✓ ...So there is a lot of waste



Waste management infrastructure in Finland's South-West archipelago

Today we have ~40 waste and recycling points on 40 different islands

- Keep The Archipelago Tidy's service boat collects the waste from islands and brings it to mainland where LSJH cooperation companies garbage truck picks up the waste and transport it further for utilization and recycling
- Costs are divided according to use → it's a win win





Map of Roope services and the shared KAT and LSJH wastepoints

<https://www.roopekartta.fi/map>

Roope Services



The Association maintains Roope services, which are intended for those travelling in and around Finnish waterways, both at sea and at lake regions.

Roope services enable sustainable water tourism. They help to keep our waters litter-free and reduce eutrophication.



200 Roope service-stations all over Finland



Gulf of Bothnia



Saimaa



Päijänne

Pirkanmaa



Eastern Gulf of Finland

The Archipelago Sea

Roope waste and sorting stations



Mixed waste, glass, bottles, small metal and, in some locations, paper and cardboard, plastic and biowaste are received in the Roope waste and sorting stations.

Dry toilets



Dish washing facilities



Floating boat sewage pump-out stations



Saunas for members



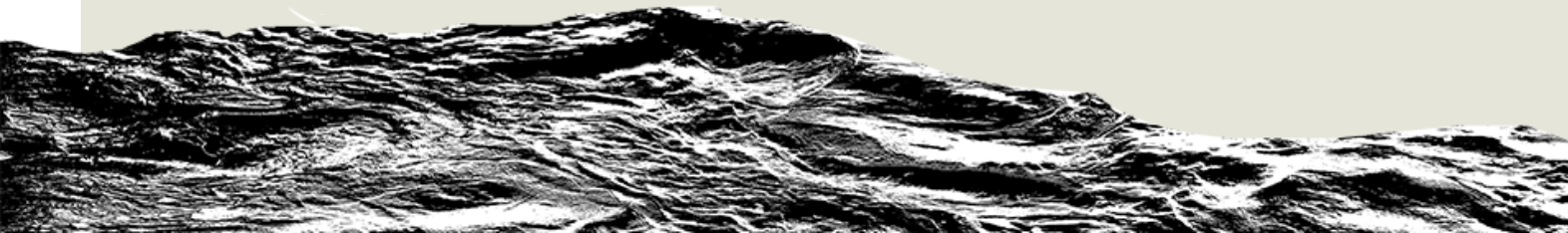


KAT fights against marine and lake littering

KAT has been doing antilittering work since 1969

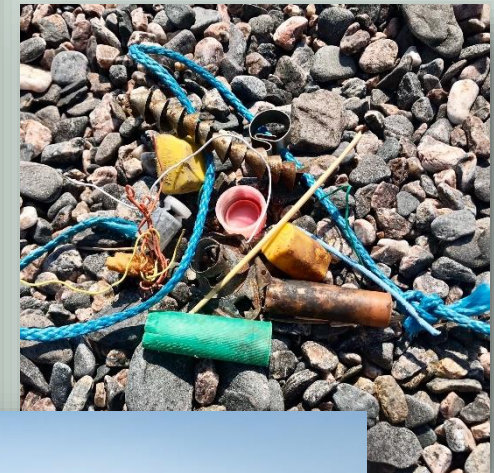


- We take care of peoples trash when they are travelling in our beautiful archipelago or lake areas.
- We help people to do right thing – sort their waste even when travelling.
- We educate in a positive but effective way.
- We activate people and tell them what impact their habits and behavior have.
- We research what kind of litter can be most commonly found on the beaches and report it to HELCOM
- We want to find all litters pathways into to the water and prevent it.



Clean Beach (Siisti Biitsi)

- Clean Beach is an unique beach clean-up programme organised by Keep the Archipelago Tidy.
- The purpose is to tidy up beaches, raise awareness about the littering situation, collect information about littering on our beaches, and combine concrete environmental work and a fun day outdoors!
- Everyone can attend! It is simple, easy, fun and good work for environment!
- Read more: siistibiitsi.fi



Challenges in the future

- ✓ It's commonly known, that a great amount of litter to the seas comes from wastewater.
- ✓ Several of the 7 700 cottages and houses in the south-west archipelago area need to empty the sludge well somehow because they are not connected to the sewage system
- ✓ Until now, the responsibility of emptying the well has been on the owner of the house. In the future the responsibility is on our company, LSJH. It depends on the wastewater system how often the emptying has to be done → could be anything from once a year to every third year
- ✓ Also in this the cooperation between LSJH and KAT is important





Thank You!

Read more:

www.pidasaaristosiiistina.fi

www.lsjh.fi

